



Fall 2016
Jami Frazier Tracy, Editor

Heritage

The Wichita-Sedgwick County
Historical Museum Association

CHISHOLM TRAIL

SESQUICENTENNIAL

DRIVING THE AMERICAN WEST

1867-2017



The Chisholm Trail fundamentally changed the American West. From the birth of the cowboy as icon to the revival of the cattle industry, the Old Chisholm Trail helped shape our popular culture by altering how we thought of the American West and the individuals who lived there.

From 1867 to 1872, the Old Chisholm Trail, which ran from various ranches in Texas to stockyards in several Kansas towns, saw nearly a million head of cattle pass from Texas ranchland through Oklahoma to Abilene, Newton, and Wichita, and from there by rail to major American markets such as Kansas City and Chicago. The cattle industry in Texas had been throttled by the Civil War, but with the establishment of the Chisholm Trail, ranchers had a path to riches.

The men who kept the herds together and moving in the right direction were called cowboys, and while cattle had been attended by men on horseback for centuries, it was not until the Chisholm Trail came to prominence that the cowboy became an iconic

ON VIEW AT THE
HISTORICAL MUSEUM
MARCH 9 - MAY 2, 2017

continued on page 2

CELEBRATING 150 YEARS OF THE CHISHOLM TRAIL



continued from page 1

figure in the American imagination. Stories from the trail, from nighttime stampedes to brushes with Southern Plains tribes, helped to cement the cowboy as the symbol of the hardscrabble American West.

Chisholm Trail

Sesquicentennial: Driving the American West 1867-2017 is a celebration of the 150th anniversary of the Chisholm Trail. This traveling exhibit, originating from Symphony in the Flint Hills and sponsored by Lost Trail Soda, invites visitors of all ages to explore the Chisholm Trail from its inception in the 1860s to today.

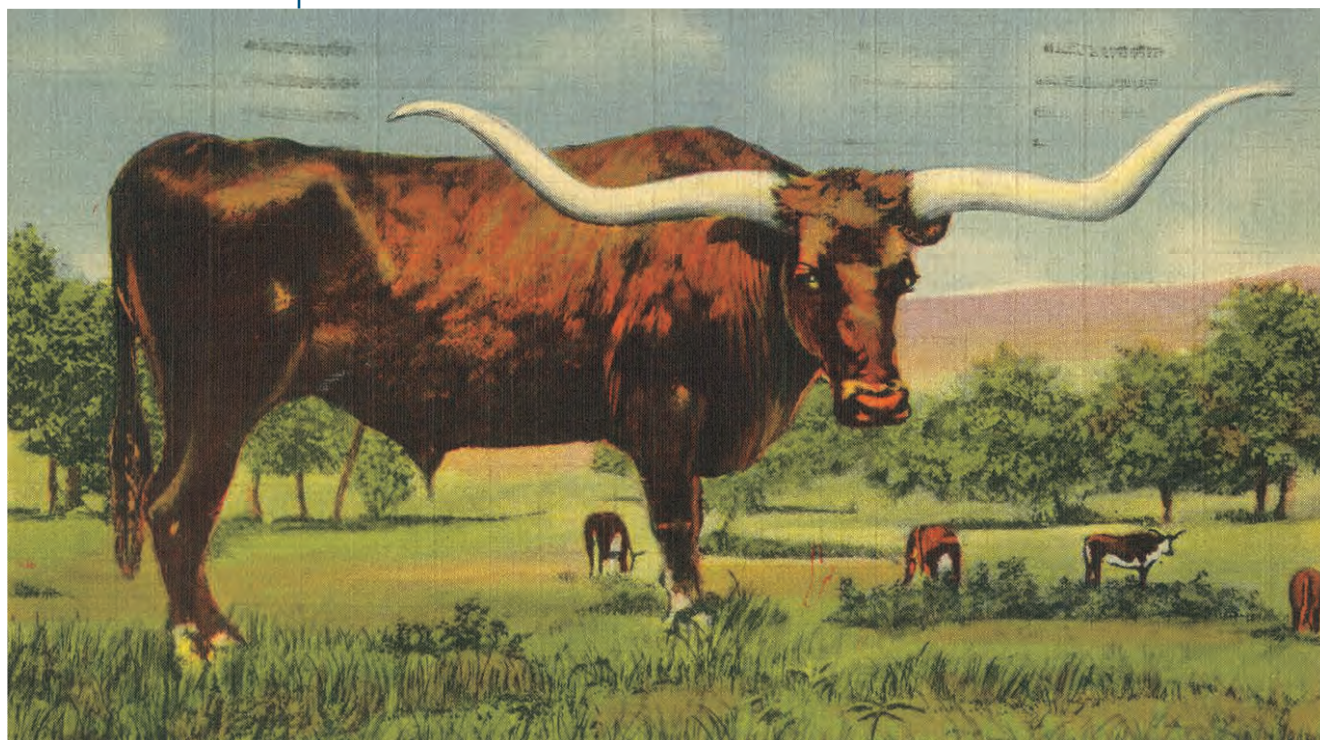
Exhibit highlights include interactives, video interviews with historians and scholars,

video and audio clips of movies and songs, and life-size longhorn cattle.

Chisholm Trail Sesquicentennial: Driving the American West 1867-2017 is a joint project by Symphony in the Flint Hills and Flint Hills Design. Major funding comes from Lost Trail Soda.

The Historical Museum is the first organization to host *Chisholm Trail*

***Sesquicentennial: Driving the American West 1867-2017!* Several programs and events are being planned, including a Kansas Day Celebration on Sunday, January 29th, 2017, sponsored by WHiMS. Look for updates in the months to come!**



Director's Message

This fall we pause to celebrate the recent accomplishments that come of a successful fundraising campaign. In 2011 when the Museum's board of trustees and staff decided that the Museum could do more, you our supporters agreed and away we went. Now we are seeing the many faceted results of our collective effort taking shape. In Education, increased staff address visitor engagement and programs; in new exhibits, the Courtney and Marcellette Davis Gallery, Lois Kay Walls Gallery, Civics & Government exhibit, and an immersive exhibit recreating the building's original 1892 Mayor's office. Just as significantly our campaign attracted substantial pledges for future success by way of estate gifts.

Additionally, an opportunity for a special achievement came to us through the campaign's course – the renovation of Heritage Square. During the first year as the Museum's campus, this lovely and historic urban space has been the place of weddings, a memorial service, concerts, performance, picnickers and student groups. Additionally Museum visitors enjoy "The Square" as part of their everyday museum experience. This success has afforded the Museum a wonderful new connection to our community. I thank all those who joined the campaign to make this vision a reality!

Eric M. Cale
Executive Director

Staff News

After sixteen years as Office Manager, **Patricia Rhea** announced her retirement recently. Pat efficiently managed grants, accounts, and memberships, created press releases and marketing pieces, fielded questions and made referrals, and corresponded with members and the public, always with grace and kindness of spirit. In her retirement, Pat looks forward to spending more time with her seven grandchildren, but you will still see her at events and programs as a Museum member!

Museum Educator **Abby Miller** has resigned her position and is embarking on a new career as an online educator. Hired in the fall of 2009, Abby brought a renewed energy to the Education Department. Abby coordinated our Senior Wednesday lecture series, managed school tours, and developed programs for all ages with enthusiasm!

Silver Anniversaries!

Two staff members recently celebrated twenty-five years at the Historical Museum! Since August of 1990, **Greg Gilmer** has excelled in exhibit preparation, security, and facility operations. Greg's involvement with the Museum dates to the 1970s, when he was part of the team renovating City Hall for museum use.

Jami Frazier Tracy began as Curator of Collections in December of 1990. Jami is responsible for all aspects of collections management and is a key participant in exhibit development and programming. Jami responds to hundreds of research requests annually, writes grants to support exhibits and collections, manages the Museum's social media, and edits the *Heritage* newsletter.

Welcome to our New Museum Educator



Laurie Conner

The Museum is happy to welcome **Laurie Conner** as our newest Museum Educator, who joins McIlwaine Educator Cynthia Martinez-Woelk in the Education Department.

Laurie retired after teaching in the Wichita School District for 30 years. For the last ten years she taught fifth grade at Irving Elementary. Prior to that she was a middle school teacher at Marshall Middle School where she taught Math, Language Arts, Social Studies, and ESOL (English to Speakers of Other Languages). She has a degree in elementary education as well as psychology. She also has a Master's Degree in Curriculum and Instruction from Wichita State University. Laurie Conner is a long time resident of Wichita and is married to Steve Conner. They have two sons.

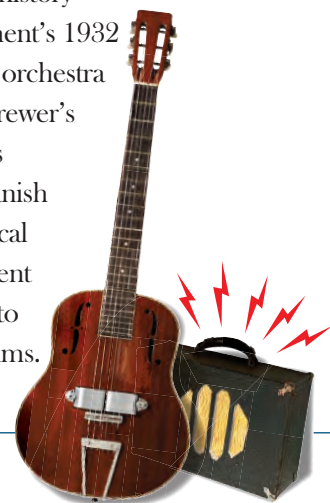


Director Eric Cale greets Marty Stuart and His Fabulous Superlatives at the Museum.

The Electric Guitar: Wichita's Instrument

The Museum's Electric Guitar Symposium attracted the attendance of numerous out of town visitors over three days and generated coverage in several widely read publications including *Popular Science* and *Guitar Aficionado* magazines. A highlight of the Symposium was the arrival of celebrated Nashville singer, songwriter, and guitarist Marty Stuart and his Fabulous Superlatives! Marty and his Superlatives visited the Museum, viewed the exhibit, and later shared the stage at Barleycorn's with Symposium presenters Deke Dickerson, Dr. Wayne Goines and Dr. Matthew Hill.

The Symposium and its companion exhibit explored the origin of the electric guitar and its role in shaping world culture. Wichita is at the center of the instrument's history having the distinction of hosting the instrument's 1932 debut in the hands of Gage Brewer, a local orchestra leader and guitarist. The exhibit featured Brewer's guitar, on loan to the Museum, and been as acknowledged as the first viable electric Spanish guitar ever made – significant because musical culture has been dominated by the instrument since the 1950s. Participants have resolved to schedule and participate in future symposiums.





The Historical Museum presents our Eighth Annual Essay Contest!

Sponsored by the DeVore Family Fund.

Theme: **Taking a Stand
in History**

One winner from each of the following grade levels (6-8 & 9-12) will receive a \$200 prize and a collection of books for his or her class!

Contest Rules:

- All Sedgwick County students in grades 6-12 in a public, private, or parochial school, or those who are home schooled are eligible.
- The entire essay must be the student's original work.
- Entries must be 300-600 words in length.
- Any essay with information copied directly from sources without use of quotation marks and cited resource will be disqualified.

Form:

- The essay is to be handwritten in ink, typed, or prepared on a computer word processor, using black type in a non-script font no smaller than 12 point or larger than 14 point.
- Please include a Title Page with the following information: Title of the essay, contestant's full name and age, contestant's complete mailing address, telephone number, and email address (if available), name of contestant's school with grade level indicated.
- Essays must have a Bibliography listing all references utilized. Internet resources, if used, should be cited in similar format, along with the web address used to access the document online.

Contest Parameters:

- Entries may be turned in at the Historical Museum front desk or mailed to the Historical Museum at the following address: 204 S. Main Wichita, Kansas 67202
- Entries must be received by March 31, 2017
- Essays will be judged on historical accuracy, originality, content, adherence to theme, organization of material, spelling, and grammar.

Your tax savings could benefit the museum!

When the primary beneficiary of a retirement plan such as an IRA or a 401(k) turns 70 ½ years of age, federal law requires a minimum amount be distributed annually and the distribution is subject to federal taxation. However, the law permits transfers up to \$100,000 given to a charitable organization be tax free. Known as a Charitable Rollover, made permanent by Congress last year, giving in this manner is tax free and will satisfy all or part of one's minimum distribution requirement.

A Charitable Rollover enables a tax savings while leaving a legacy at the Museum.

For more information, call Sally Buch, WSCHM Development Director at 316-265-9314 or email sbuch@wichitahistory.org.



Senior Wednesdays

AT THE WICHITA-SEDGWICK COUNTY HISTORICAL MUSEUM

Visit the Museum the 4th Wednesday of each month from January to October and enjoy special Historical Museum programs developed with active senior audiences in mind. A special \$2 admission for seniors and their guests is offered; admission is free for members. The Senior Wednesday programs at the Historical Museum begin at 10:00 am, and the doors open at 9:30. Refreshments are served. Senior Wednesdays in 2016 at the Historical Museum are sponsored by WHiMS. For more information about the Museum's Senior Wednesday programs, visit www.wichitahistory.org or www.seniorwednesday.org.

Wreath Festival

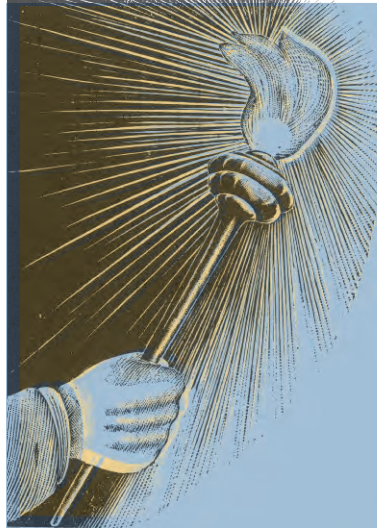
The Annual Holiday Wreath Festival will be held on **Thursday, November 17th and Friday, November 18th from 10:00 am until 2:00 pm**. The Wreath Festival will feature wreaths, holiday gifts of all kinds, delicious baked goods, festive music, and special exhibits. Lunch will be served on both days from 11:00 am until 1:00 pm. The cost is \$15, and reservations will be accepted for groups of 6 or more by calling the Museum office at 265-9314. Holiday shoppers won't be disappointed by the selection of unique Christmas accessories, stocking stuffers, ornaments, and other gifts. Book lovers will have dozens of titles to choose from, appealing to every taste. You won't want to miss the Wichita Cottage, adorned to portray a traditional Victorian Christmas. Plan now to bring guests to the Wreath Festival and enjoy the holiday spirit at the Museum.

The WHiMS announce new officers

President: Vicki Churchman
Vice President: Deborah Oller
Recording Secretary: Gail Williams
Corresponding Secretary: Nancy Delany
Treasurer: Barbie Parsons
Advisor: Jeanne Urban

The WHiMS Committee works to provide support to the Museum in ways that reflect its mission and vision while enhancing visitor experience, attracting the public, and providing a dynamic connection to volunteers. We thank WHiMS for their efforts in hosting Kansas Day, Blue Moon Party, Ice Cream Social, Wreath Festival, the Museum's Senior Wednesday Programs, and operation of the Museum's Gift Shop.

The WHiMS meets monthly and welcomes Museum Members' participation. Visit WHiMS on Facebook - listed as "Wichita Historical Museum Society."



Torchlight Tour

2 NIGHTS

- **Final Friday, October 28th 6-9pm**
(open to the public)
- **Members Only Torchlight Tour**
New this year
Saturday, October 29th, 6-9pm

Just in time for Halloween, join us for a MEMBERS ONLY Torchlight Tour with Heritage Square activities on Saturday, October 29th from 6:00 - 9:00 pm! The Torchlight Tours allow visitors to explore the Museum in a new way - in the dark! Coleman Company flashlights are provided for participants to visit four floors of Wichita history in a different way, including a visit to the Clock Tower! Space is limited for this family-friendly event with Halloween treats provided by the Nifty Nuthouse. Visit Heritage Square, newly renovated and rededicated, and enjoy family activities, weather permitting.

The general public is invited to attend our Final Friday Torchlight Tour on October 28th from 6:00 - 9:00 pm. Family activities are planned for Heritage Square, weather permitting. Space is limited for this evening of spooky fun!

Why We Collect What We Collect

RECENT ACQUISITIONS

The Museum's mission is to collect, preserve, and interpret artifacts and use them to tell stories illuminating local history. Our latest Recent Acquisitions exhibit educates visitors about our efforts to actively collect material culture in support of our mission. The Museum's collection currently includes over 70,000 artifacts (by definition, man-made objects), with about 3,500 artifacts on exhibit at any one time. The wide variety of artifacts included in the Museum's collection is considered encyclopedic.

Recently acquired artifacts featured in this special exhibit include the following:

Davy Crocket hat – The legend of a 19th century frontiersman and folk hero was reborn in 1954 when Walt Disney produced the television serial Davy Crockett. The program popularized the "coonskin" cap, which originally consisted of the entire skin of the raccoon including its head and tail. The cloth version on exhibit was obtained at Kiddie Land, a favorite destination for Wichitans in the mid-twentieth century. Opened in 1948 at 3833 East Harry as the Consolver Brothers Sports Center, it grew to include two miniature golf courses, a driving range, amusement park, two swimming pools and a skating rink. Construction of the Wichita Mall forced the closure of the complex in 1968.

Plaster of Paris Chisholm Trail Jubilee souvenir figurine – Wichita celebrated its pioneer past in September of 1947 during the "Chisholm Trail Jubilee," a week-long event with parades, shows, beard-growing contests, and other entertainment. Christine Ewertz Righetti

of Colwich received a Jubilee souvenir during the Jay Cees Rodeo, and it was donated to the Museum by Susan Martinson. The trail, named for Jesse Chisholm, was established as a trade route and was later made famous by cattle drives from Texas to Kansas. The Chisholm Trail 150th Anniversary will be celebrated in 2017.

White polyester St. Francis School of Nursing student uniform – In the early years of the 20th century, the State of Kansas began to require training and certification for nurses, leading to the opening of the St. Francis School of Nursing in 1917. As the century progressed, nursing education shifted from hospital-based diploma programs to college campuses. When the St. Francis School of Nursing celebrated its final commencement in 1980 nearly 2,500 individuals had graduated from the program. The uniform on exhibit dates to 1973 and was a gift from the St. Francis Hospital Museum and St. Francis School of Nursing Alumni.

Pair of cowboy boots custom-made by Carl McDowell – Carl McDowell was a former Teitzel-Jones Boot Company employee who opened his own boot shop in Wichita in 1946. His shop, conveniently located across from the Wichita Livestock Exchange, attracted ranchers and working cowboys across Kansas and Oklahoma. McDowell made around two hundred pairs of custom-made boots a year, working alongside a few employees and his wife, Martha. McDowell retired in 1991 and died in 2005 at the age of 93. On exhibit is a pair made for Leon Sternberger, commissioned by

his son, Tracy, as a birthday gift in 1987. Tracy Sternberger later donated the boots to the Museum.

Gil McNabb campaign poster – Gil McNabb worked for the Boeing Company when he and two partners opened A Blackout Tavern in 1964, a popular meeting place for Wichita's counterculture. McNabb ran a campaign for Wichita City Commissioner in 1971. His slogan, "Keep 'em flying with Gil McNabb," referenced slogans from the era of WWII but more subtly illegal drug use and was printed on campaign posters. According to McNabb, "Trouble was, everybody got so stoned they didn't put the signs up." In the March primary election, McNabb received 229 votes, losing to ACLU attorney Jim Lawing who garnered over 3000. Cathy Henkel recently donated this poster to the Museum.

FUN FACT

An inventory of the collection was recently completed by Assistant Curator Leslie Dvorak. This exhaustive effort revealed that the "Wichita – the Magic City" exhibit utilized 487 collection artifacts, "Spirit of Wichita" – 545, "A Childs World" – 484, The Drug Store – 1,319, and the most populous, "A Wichita Cottage" containing 1,354 objects!

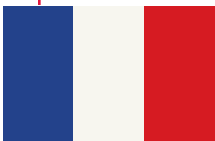


The Wichita-Sedgwick County
Historical Museum Association
204 South Main · Wichita, Kansas 67202 · 316-265-9314 · www.WichitaHistory.org

Non-Profit
Organization
U.S. Postage
PAID
Permit 759
Wichita, KS



Wichita-Sedgwick County Historical Museum
activities are made possible in part by the
City of Wichita and Sedgwick County Board
of Commissioners



VISITORS FROM NEAR & FAR

The Museum has attracted tens of thousands of visitors from across our region and around the world, including guests from England, France, Iraq, Mexico, Canada, Puerto Rico, Ukraine, Germany and Thailand. Comments made online and on surveys include:

I love this place!

Glorious! Wow!

Thanks!

AWESOME! LEARNED SO MUCH!

*I always see something I
didn't before. Love it!*

*Best museum
ever! A jewel!*

*From Iraq to Wichita,
you are awesome!*

Great family fun!

Awesome x 1000!

Excellent aviation history!

Best in whole region!

*How marvelous to have
this historic building
and history!*

*Wonderful, I learned a lot
about my home town!*

*We are so happy
to visit Wichita!*



OUR VISION: To provide a world class Museum experience, advancing the understanding and exploration
of the rich historical and cultural heritage of Wichita and Sedgwick County Kansas.