



Heritage

The Wichita-Sedgwick County
Historical Museum Association

Fall 2017
Jami Frazier Tracy, Editor



Victorian Furniture from the Museum Collection

The Museum's Slawson Gallery on the fourth floor is a versatile space used for traveling and other special exhibits created from the Museum's collection of over 70,000 artifacts. A new Victorian furniture exhibit is currently featured in the Slawson Gallery, drawing from the Museum's extensive collection of furnishings and decorative arts.

Wichita's origins, documented through photographs, are replete with the visual spectacle of Victorian design. Spanning nearly 70 years, the Victorian Era is named for Great Britain's Queen Victoria, who was widely influential during her reign from 1837 until her death in 1901.

The Victorian Era in the United States was a time of great social, economic, and scientific change.

continued on page 3

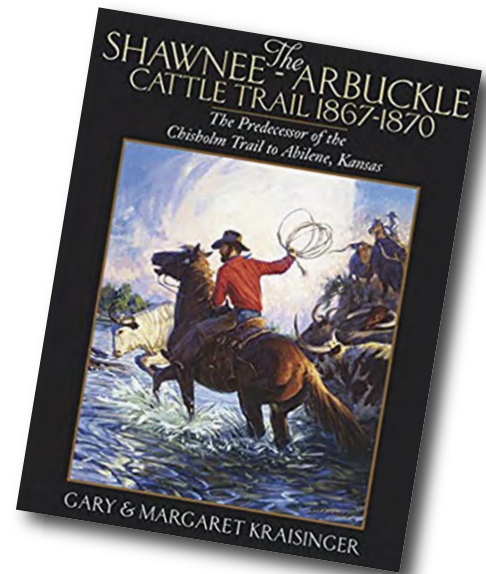


BOOK EVENT

The Shawnee Arbuckle Cattle Trail

Sunday, Nov. 12th at 2:00 p.m.
in the Museum's DeVore Auditorium

The last program in the Museum's series of Chisholm Trail 150th events will feature authors and Kansas Cowboy Hall of Fame inductees Gary and Margaret Kraisinger, who will speak about their new book, *The Shawnee Arbuckle Cattle Trail 1867-1870 – The Predecessor of the Chisholm Trail to Abilene, Kansas.*



Historical Museum Costumes on View at The Wichita Art Museum!

Savoir-Faire: 19th-Century Fashion Prints

Opening December 9, 2017
at the Wichita Art Museum

Savoir-Faire: 19th-Century Fashion Prints features Wichita Art Museum prints from French and American women's magazines together with dresses and accessories from the Wichita-Sedgwick County Historical Museum.

The exhibition traces the dynamic changes in women's fashion occurring in 19th-century Paris and the ways those far-away trends found their way to American cities, including Wichita.

Savoir-Faire joins *Americans in Paris* (opening December 16) and *Monet to Matisse: French Moderns from the Brooklyn Museum, 1850–1950* (opening February 24) for an exploration of the artistic links between Paris and America in the late 19th and early 20th centuries at the **Wichita Art Museum.**

THE MUSEUM'S ANNUAL CAMPAIGN

Over the past three decades, the Museum has sent out its annual appeal to correspond with the end of the year "giving season." As you reflect on your ability to support the organizations and charities you care most about, please know that your gift, whatever the amount, will be used to support the Museum's unique mission and is fully tax deductible. Look for this letter in the mail soon.

Director's Remarks

As a community, we are privileged to have such a fine museum of local history, a dream realized nearly 80 years ago by people who knew that this place was important and that its history needed to be preserved, interpreted and celebrated. Museum members and staff carry that sentiment forward today. I have been privileged to lead the organization for ten years now, following Bob Puckett who began as Director in 1971. As I reflect on my role, I am reminded of the generous effort of generations of supporters and staff who have brought us here. It is inspiring. I'm also inspired by the enthusiasm of a new generation who has embraced the Museum.

As a not-for-profit membership association, the Museum relies on the support of annually renewing, card-carrying members for its sustainability. Today's challenge is to convert into members some of our 4,625 Facebook friends, 51,920 website visitors and 17,000 visitors who walk through our door each year. When you receive your membership card upon renewal, please use the enclosed "Family Pass" to entice like-minded friends to visit the Museum, and perhaps become part of our legacy of support through membership. Few can boast of such an institution or of the enthusiasm for history that we have in Sedgwick County, Kansas.

Eric M. Cale
Executive Director

Furnishing the Victorian Age

continued from page 1

The Victorian Era brought an improved standard of living to an emerging and increasingly urban middle-class.

Industrialization and public education brought an improved standard of living to an emerging and increasingly urban middle-class who were eager to purchase the latest products. Advances in transportation and production made these products inexpensive and widely available, introducing the era of mass production and consumerism. The era also introduced labor saving devices that freed the time of average people to pursue leisure activities and self-improvement, piquing individual curiosity and fostering enthusiasm for reading, recreation, art, science, history, romanticism and mysticism. All of this is reflected through wide ranging design of the Victorian era furniture collected by the Museum over the past 80 years. Included in the exhibit are chairs, étagères, parlor sets, tables, and decorative arts in Eastlake, Renaissance Revival, Rococo Revival, Empire, and Art Nouveau styles. Perhaps as interesting as the furniture are various stories of provenance featured in the exhibit.



In Memoriam Vera Challis



The Museum's friends and staff mourn the loss of a long-time dedicated volunteer and supporter, Vera Challis. Mrs. Challis began her close affiliation with the Museum after the death of her husband in the early 1980s as a volunteer in the Museum Gift Shop. Soon Mrs. Challis was a fixture at the Museum, often assisting at the Admissions Desk and the Museum Office. Her generous gifts over the years include funding the American Aesthetic design enhancements to the Museum lobby, providing a visually stunning welcome for all visitors. The Museum was overwhelmed to receive a substantial gift from the Vera Challis Estate, ensuring that her legacy will continue for years to come.

Plan a tax-free gift from your IRA or a 401(k) in 2017

If you own an IRA or a 401(k), the federal Required Minimum Distribution (RMD) rules take effect at age 70½. When you receive a distribution, it is taxed as ordinary income. This tax can be avoided by using your IRA or 401(k) to make a gift that supports the Historical Museum. This is known as a Charitable Rollover and works like this:

- Instead of taking your required distribution (RMD), you can make a qualified distribution (up to \$100,000 per person) from your retirement account directly to the Museum.
- This distribution can count towards your Required Minimum Distribution.
- Although there is no tax deduction, the amount you send directly to the Museum from your IRA or 401(k) is excluded from your income for federal tax purposes, which means you pay no income tax on this amount.
- A Charitable Rollover enables a tax savings to you while leaving a legacy to the Museum.

For more information, call Sally Buch, WSCHM Development Director at 316-265-9314 or email sbuch@wichitahistory.org

SPECIAL THANKS TO FOUNDATION SUPPORT

Museum support during 2017 includes funding from: The Goebel Family Charitable Foundation, Courtney and Marcellette Davis Trust, The Charitable Foundation, Fidelity Bank Foundation, The Devore Family Foundation, The Charles and JoAnne McIlwaine Foundation, The Lois Kay Walls Foundation, Beach Family Foundation, Kansas All-Star Scholars Fund, Mosby Lincoln Foundation, The Barton Charitable Foundation, The Bonavia Family Charitable Trust, The Harvey H. and Mary Faye McCoy Charitable Gift Fund, and the Dr. and Mrs. Stanley Reifsneider Foundation.



The Historical Museum
presents our Ninth Annual
Essay Contest!

Sponsored by the DeVore Family Fund.

Theme: **Conflict & Compromise**

One winner from each of the following grade levels (6-8 & 9-12) will receive a \$200 prize and a collection of books for their class!

Contest Rules:

- All Sedgwick County students in grades 6-12 in a public, private, or parochial school, or those who are home schooled are eligible.
- The topic must be related to Wichita and/or Sedgwick County history.
- The entire essay must be the student's original work.
- Entries must be 300-600 words in length.
- Any essay with information copied directly from sources without use of quotation marks and cited resource will be disqualified.

Form:

- The essay is to be handwritten in ink, typed, or prepared on a computer word processor, using black type in a non-script font no smaller than 12 point or larger than 14 point.
- Please include a Title Page with the following information: Title of the essay, contestant's full name and age, contestant's complete mailing address, telephone number, and email address (if available), name of contestant's school with grade level indicated.
- Essays must have a Bibliography listing all references utilized. Internet resources, if used, should be cited in similar format, along with the web address used to access the document online.

Contest Parameters:

- Entries may be turned in at the Historical Museum front desk or mailed to the Historical Museum at the following address:
204 S. Main Wichita, Kansas 67202
- Entries must be received by March 31, 2018
- Essays will be judged on historical accuracy, originality, content, adherence to theme, organization of material, spelling, and grammar.

YOUNG HISTORIANS CLUB!

Each year, hundreds of area students take part in National History Day. The subject of history attracts young people who grow into teachers, writers, archivists, attorneys, museum professionals, and historians. The Museum is actively involved in fostering their interest through the Young Historians Club which meets monthly at the Museum. The club provides young history enthusiasts with a learning laboratory featuring special behind-the-scenes access to the Museum and the study collection of artifacts, as well as resources for special projects of their own design and creation of exhibits in the Davis Gallery. Contact the Museum for more information on this special club.

Senior Wednesdays

AT THE WICHITA-SEDGWICK COUNTY HISTORICAL MUSEUM

Visit the Museum the 4th Wednesday of each month from January to October and enjoy special Historical Museum programs developed with active senior audiences in mind. A special \$2 admission for seniors and their guests is offered; admission is free for members. The Senior Wednesday programs at the Historical Museum begin at 10 am, and the doors open at 9:30. Refreshments are served. Senior Wednesdays in 2016 at the Historical Museum are sponsored by WHiMS. For more information about the Museum's Senior Wednesday programs, visit www.wichitahistory.org or www.seniorwednesday.org.



The WHiMS announce new officers

President: Deborah Oller

Vice President: Gail Williams

Recording Secretaries: Nancy Delany and Barbie Parsons

Corresponding Secretary: Nancy Delany

Treasurer: Alice Smith

Advisor: Vicki Churchman

The WHiMS Committee works to provide support to the Museum in ways that reflect its mission and vision while enhancing visitor experience, attracting the public, and providing a dynamic connection to volunteers. We thank WHiMS for their efforts in hosting Kansas Day, Blue Moon Party, Ice Cream Social, Wreath Festival, the Museum's Senior Wednesday Programs, and operation of the Museum's Gift Shop.

The WHiMS meets monthly and welcomes Museum Members' participation. Visit WHiMS on Facebook – listed as "Wichita Historical Museum Society."

Wreath Festival

The Annual Holiday Wreath Festival will be held on **Thursday, November 16th** and **Friday, November 17th** from 10:00 am until 2:00 pm. The Wreath Festival will feature wreathes, holiday gifts of all kinds, delicious baked goods, festive music, and special exhibits. Lunch will be served on both days from 11:00 am until 1:00 pm. The cost is \$15, and reservations will be accepted for groups of 6 or more by calling the Museum office at 265-9314. Holiday shoppers won't be disappointed by the selection of unique Christmas accessories, stocking stuffers, ornaments, and other gifts. Book lovers will have dozens of titles to choose from, appealing to every taste. You won't want to miss the Wichita Cottage, adorned to portray a traditional Victorian Christmas. Plan now to bring guests to the Wreath Festival and enjoy the holiday spirit at the Museum.



Holiday Exhibits

This holiday season, enjoy the Museum's tradition of decking the halls and trimming the Wichita Cottage to portray a traditional Victorian Christmas. The West Gallery will feature the Miniature Christmas Trees created by Sylvia Jackson and the Moore Family Santa Claus Collection.

Coming to the Museum in 2018

KANSAS DAY CELEBRATION!

Celebrate Kansas Statehood on Sunday, January 28th, from 2 – 3 pm with a musical celebration! Free and open to the public.

BLUE MOON AT THE MUSEUM

You're invited to come celebrate in high style! Join us Saturday, April 21st, 7-10 pm for an exciting evening of dinner, drinks and music. The event will transform the Museum into the original Blue Moon Nightclub, which was located on South Oliver during the 1940s and 50s. The club was a popular gathering spot for adults to dine and dance to the nation's most famous orchestras. Donna Tucker, internationally renowned jazz singer, and her quartet will entertain with songs of the era as guests enjoy fine food and drink.

This is a very popular event in its 10th year – only 90 reservations will be accepted, so act soon. For reservations and more information, call 316-265-9314 or email wschm@wichitahistory.org. Admission to the Blue Moon Party is \$100 per person, of which \$50 is a tax deductible donation to the Museum, a 501(c)(3) Not for Profit Organization.

This fundraising event for the Museum is hosted by the Wichita Historical Museum Society (WHiMS) and underwritten by generous sponsors.

ICE CREAM SOCIAL

Saturday, May 5th, 2018 1-4pm in Heritage Square

Join us in Heritage Square for an old-fashioned Ice Cream Social! Sponsored by the Wichita Historical Museum Society.

EXHIBIT

JACOB RIIS

How The Other Half Lives

Coming to the Museum in June 2018

Jacob Riis (1849–1914) was a pioneering newspaper reporter and social reformer in New York at the turn of the twentieth century. His then-novel idea of using photographs of the city's slums to illustrate the plight of impoverished residents established Riis as a forerunner of modern photojournalism. *Jacob A. Riis: How the Other Half Lives* features photographs by Riis and his contemporaries, as well as his handwritten journals and personal correspondence.

New York City was the epicenter of America's thriving economy, but spawned the worst slums on earth. The Danish-born Riis emigrated to America at the age of twenty. Riis worked at night as a police reporter, often seeing the less polished side of New York City, the new home to many immigrants from throughout Europe.

By taking photographs to accompany his newspaper articles, Riis first began documenting the lives of the impoverished and the places they lived and took refuge. His interests in writing about "how the other half lived" grew, and over his lifetime Riis wrote many books about the urban poor that included his photographs.

Feeling that more could be done, Riis gave his first lantern slide lecture (a precursor to today's digital presentations) featuring his photographs in 1888. He captivated audiences with stories of his experiences and began to tour the country delivering lectures, including several in Wichita, in a crusade to advocate and bring about changes for the marginalized.

Visitors to the exhibition will experience a Riis presentation—immersive life-size photographs, as well as artifacts and personal documentation. The exhibition is made possible by the National Endowment for the Humanities. *Jacob A. Riis: How the Other Half Lives* is adapted from the exhibition *Jacob A. Riis: Revealing New York's Other Half*, organized by the Museum of the City of New York. The exhibition was curated by Bonnie Yochelson and co-presented by the Library of Congress. It was made possible with major grants from the National Endowment for the Humanities and the Terra Foundation for American Arts, as well as support from D. Euan and Merete Baird, The Malkin Fund, Ronay and Richard L. Menschel, Queen Margrethe and Prince Henrick's Foundation, C. Flemming and Judy Heilmann, Kan and Lotte Leschly, The Robert Mapplethorpe Foundation, and the John L. Loeb Jr. Foundation. It was adapted and toured for NEH on the Road by Mid-America Arts Alliance.

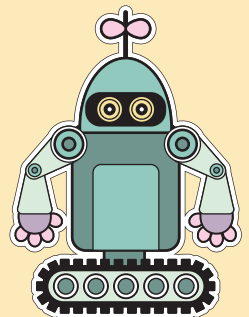


EXHIBIT

TOYS OF THE FUTURE!

Coming to the Museum in September 2018.

Featuring a celebrated local collection of fantastic toys in a special exhibit! Toys of the Future presented in partnership with Exploration Place's upcoming exhibit TOYTOPIA, opening Friday, September 21, 2018.





The Wichita-Sedgwick County
Historical Museum Association
204 South Main · Wichita, Kansas 67202 · 316-265-9314 · www.WichitaHistory.org

Non-Profit
Organization
U.S. Postage
PAID
Permit 759
Wichita, KS



Wichita-Sedgwick County Historical Museum
activities are made possible in part by the
City of Wichita and Sedgwick County Board
of Commissioners

WINDOWS ON COLLECTIONS

Rock N' Roll in Wichita

In the United States, the years following World War II saw increased prosperity leading to an unprecedented level of affluence for teenagers. Soon the nation's young constituted a new market and culture of its own. Music and fashion became the center of youth culture, providing a means of identity and creative expression. At the center of youth music was the electric guitar which quickly became the world's most popular instrument. This exhibit features artifacts recently added to the Museum's collection.



"The Serfs, 1965"